

QUALITY MATTERS AND BRAND DEFINES QUALITY

Aluminum System Solutions

Schueco prioritizes continuous innovation and refinement to exceed customer expectations, offering a diverse range of solutions like energy-efficient windows and smart building systems. Their commitment to sustainability involves using advanced technology and eco-friendly materials to minimize environmental impact while enhancing user quality of life.

Schueco engages with communities and industry experts to stay ahead of trends, fostering innovation and maintaining leadership in building design. The brand's strength lies in its adaptability, providing reliable, stylish, and responsible solutions in a changing world.

Our Commitment

Ensuring that each installation is tailored to meet the unique needs of your home. Our expert team is dedicated to providing not only top-notch products but also unparalleled customer care. With a wide range of styles and finishes to choose from, you can find the perfect windows to enhance both the beauty and energy efficiency of your space. Trust Alustar to deliver excellence, reliability, and innovation in every project, making your home more comfortable and stylish.

FACTORIES

ALUSTAR INDUSTRIES LLP
H.NO: 4-57/F, SY NO. 248,
PATI VILLAGE,
PANTANCHERU MANDAL,
SANGAREDDY DISTRICT,
TELANGANA - 502300

ALUSTAR
PLOT 34, IDA-APIIC
SIRI BUILDCON
GAMBHEERAM, ANANDAPURAM,
VISHAKHAPATNAM,
ANDHRA PRADESH - 530040

For sales inquiries contact: +91 - 90000 99513, 95535 78444
Write to us: sales@alustar.in
www.alustar.in

SCHÜCO

PREMIUM ALUMINUM

CRAFTED ENGINEERED FOR BRIGHT LIVING SPACES



WINDOWS, DOORS, VENTS FACADES, RAILINGS





A crucial element in transforming your new house into a home is your selection and specification of windows, doors, and façades. The decisions you make at this stage will have a lasting impact for years ahead. When chosen wisely, these elements can enhance your property's security, contribute to your family's happiness, and promote a more sustainable lifestyle.

The perfect combination of glass, frames, gaskets, and locking mechanisms can ensure an ideal environment while keeping your room's temperature stable, regardless of external weather conditions. Performance glass windows effectively tackle solar glare issues while offering a considerable degree of privacy from neighbors.

Additionally, think about noise management; windows with superior acoustic insulation can permanently eliminate this problem.

Choosing the right windows goes beyond mere ventilation and light; they should be user-friendly, smart, and secure systems that transform your home into a more eco-friendly space.

What are the four essential elements of aluminum windows?



Casement Openable

A window that is hinged at the side and opens outwards or inwards provides maximum ventilation and unobstructed views, typically featuring a larger transparent area than awning-type windows when opened.

Top hung window, hinged at the top, opens outward and is typically small, allowing fresh air in even during light rain when left open at different angles.

Skylight windows

A skylight window is a unique window design that is placed on the roof of a house, enabling natural light to flood into the area beneath it. They can be fixed or top hung window type.

Schueco windows offer sound reduction, heat reduction, and burglar resistance. They offer the best panoramic views and are sustainable.

Fixed

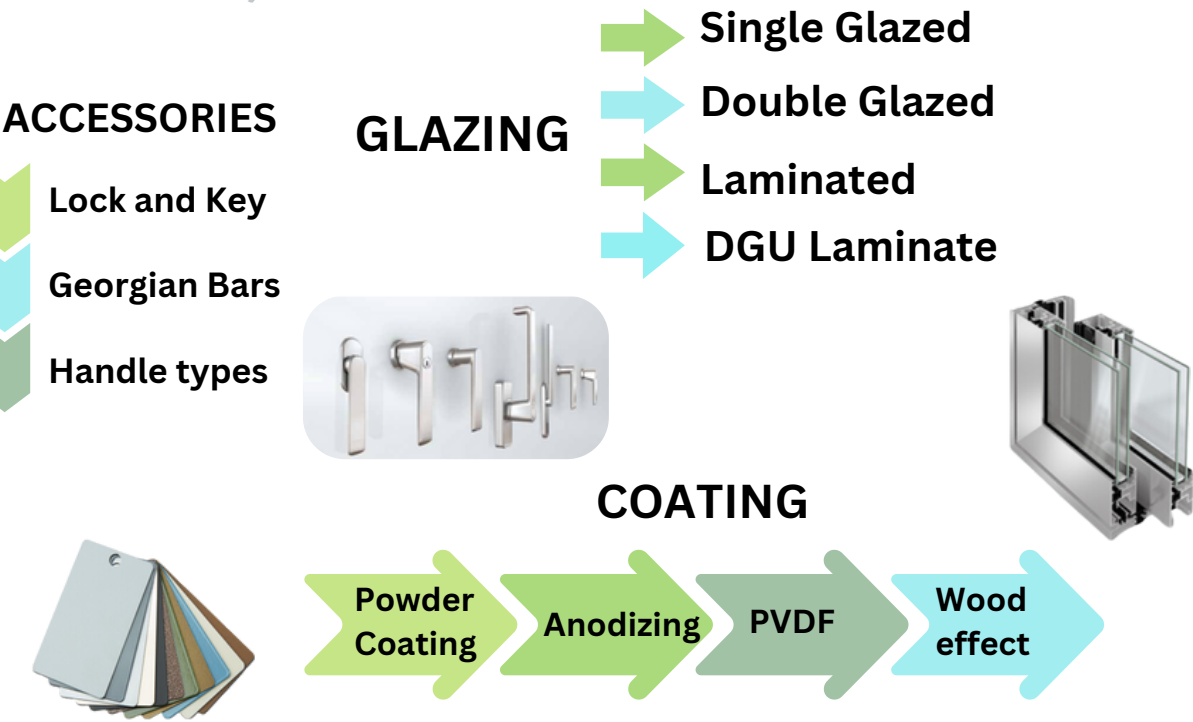
Windows are weather-resistant, perfect for brightening dim areas like stairwells without needing ventilation. They feature a sleek outer frame for a slim look and provide excellent security depending on the glass type selected.

Sliding

A sliding window is a compact version of a sliding door, offering easy operation and maximizing clear space. It can include a flyscreen, and additional locking features can enhance security by restricting opening.

More options

Tilt and Turn window can open in two ways: it can tilt inwards from the top, hinged at the bottom for ventilation, or it can open inwards like a standard casement window with side hinges.



Sliding Systems



Single, Double, or Triple Tracks:

A single or double track is usually ideal for most openings; however, for particularly large openings, you might need a third track or even more.

Thresholds:

A concealed threshold can be installed flush with the floor.

Gentle Door Closing Mechanism:

Features controlled braking to stop doors before hitting the frame, preventing finger injuries.

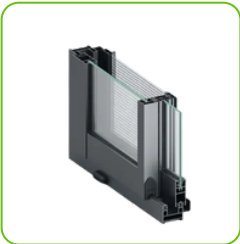
Transparency:

Numerous modern designs hide the frame within the outer walls and have slim central meeting stiles, offering a similar appearance and view whether the doors are open or closed.

Sliding options:

Sliding doors function through single or double tracks for standard and larger openings. They offer options like pull-across movement, lift/slide for enhanced weather-tightness and sound insulation, and tilt/slide for ventilation with added weather and security protection.

Schüco AS 30 SC.NI.



Planning Benefit

- Two- and Three-Lane Sliding Systems
- Single and double glazing
- Schüco fly screen can be installed on both internal and outward sliding tracks

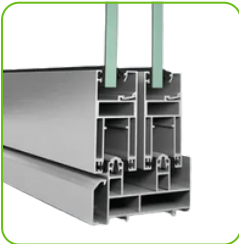
Schüco AS 32 SC.NI.



Planning Benefit

- Two- and Three-Lane Sliding Systems
- Single and double glazing
- Internal fly mesh
- Minimal face width, Puncture free bottom frame
- Seamless Dripbar

Schüco AS 39 SC.NI.



Planning Benefit

- 90° corner sliding available
- Flymesh
- Classic or Slim interlocks
- Single, Double and Triple tracks
- Single or Double glazing
- Sound insulation upto 36 db(A)

Product Details			
Application: Window or Door	AS 30 SC NI	AS 32 SC NI	AS 39 SC NI
Min.-max. vent height	800-2400mm	800-2700mm	650-3500mm
Min.-max. vent width	800-1200mm	800-1400mm	400-2500mm
Vent frame face width	60mm	60mm	37mm
Outer frame face width	42mm	42mm	47mm
Interlock face width	30mm	30mm	37mm
Basic depth	69mm	69mm	83mm
Number of tracks	2,3	2,3	1,2,3
Glass panel thickness	4-14mm	6-24mm	4-28mm
Watertightness	300Pa	300Pa	C5/B5
Wind load resistance	2 KPa	2.5 KPa	Min.-max
Air permeability	600Pa	300Pa	Class 4

AS ICD 50.NI



Planning Benefits

- Ensures effortless, quiet operation with exceptional performance
- Offers a diverse range of opening styles, from single to multiple tracks
- Compatible with large glass panels
- Available in classic or slim interlocking designs
- Features internal fly mesh
- In wall solution with flexible design

Product Details	
Application: Window or Door	
Min.-max. vent height	650-4500mm
Max. vent width	300mm
Outer frame face width	80mm
Interlock face width	40mm
Basic depth	120-192mm
Number of tracks	1,2,3
Glass panel thickness	4-14mm
Watertightness	900Pa
Wind load resistance	3 KPa
Air permeability	600Pa

The charm of a sliding door comes from the sunlight it brings and the stunning views it showcases. When choosing a door, look for one that emphasizes "transparency!"

Enhancements



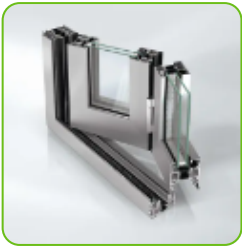
Besides a straightforward pull-across motion, you can also choose a lift/slide option that enhances weather tightness and acoustic performance.

Flyscreens can be installed with Sliding windows and doors

By incorporating additional locking mechanisms, you can limit the opening, which enhances the level of security.



ASS 70 FD



Bi Fold Systems

Product Details	
Application: Window or Door	
Min.-max. vent height	500-3000mm
Min.-max. vent width	500-1500mm
Vent frame face width	54mm
Outerframe face width	60mm
Basic depth	80mm
Threshold height	<12.5mm
Glass panel thickness(Max)	45mm
Watertightness	Class 9A
Wind load resistance	Class C3/B3
Air permeability	Class 4

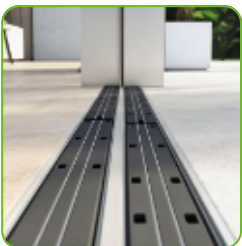
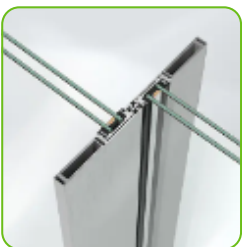
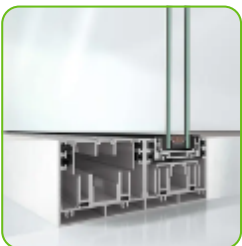
- Planning Benefits**
- Flat threshold that ensures a high degree of water tightness
 - Option for inward or outward opening with a 90° corner
 - Equipped with a magnetic retaining catch
 - Vent stacks can be folded to the right, left, inward, or outward
 - Provides excellent weathertightness

Whether it's the dawn of a new day or the calm of twilight, lush green fields or softly bubbling springs, or even the breathtaking view of a city skyline—experience it all without any barriers.

AS PD 70.NI

- Planning Benefits**
- Perfect for expansive openings that include a hidden frame and floor-to-ceiling glass, providing an uninterrupted panoramic view.
 - The innovative dynamic threshold is a patented design that rises automatically, ensuring a flush threshold at the bottom and sides.
 - Features an overlapping interlock with a sleek face width.
 - The integrated handle is custom-designed to be a seamless extension of the system.

Product Details	
Application: Door	
Min.-max. vent height	2200-4500mm
Min.-max. vent width	1000-3000mm
Outer frame face width	80mm
Interlock face width	19mm or 25mm
Basic depth	192mm
Vent frame width	54mm
Glass panel thickness	14mm-40mm
Watertightness	Class 9A
Wind load resistance	Class CE 3000
Air permeability	Class 4



Schueco Panorama Sliding Door Series

Panorama Door

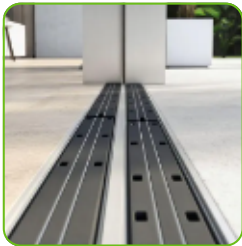


Planning Benefits

- Handle-free system enables a minimalistic design.
- Floor-to-ceiling glazing enhances transparency and aesthetics.
- Various opening types with double and triple-track frames, including 90° corners.
- Continuous pull grip offers a sleek design.
- Meets European and AAMA standards for reliability.
- Manual operation features an integrated retaining catch.

Product Details	
Application: Door	
Min.-max. vent height	2000-3500mm
Min.-max. vent width	1000-3000mm
Min Interlock face width	37mm
Basic depth	107mm
Tracks	2,3
Burglar resistance	Upto RC1
Min-Max Glass Panel thickness	6-32mm
Watertightness	Class 7A
Wind load resistance	Class C2/B2
Air permeability	Class 3

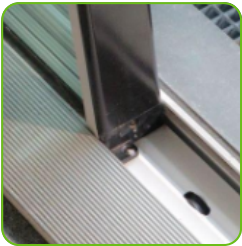
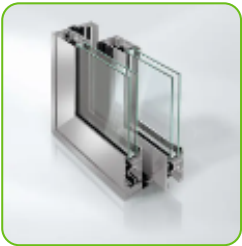
AS 39 PD NI



ASS 50

Planning Benefits

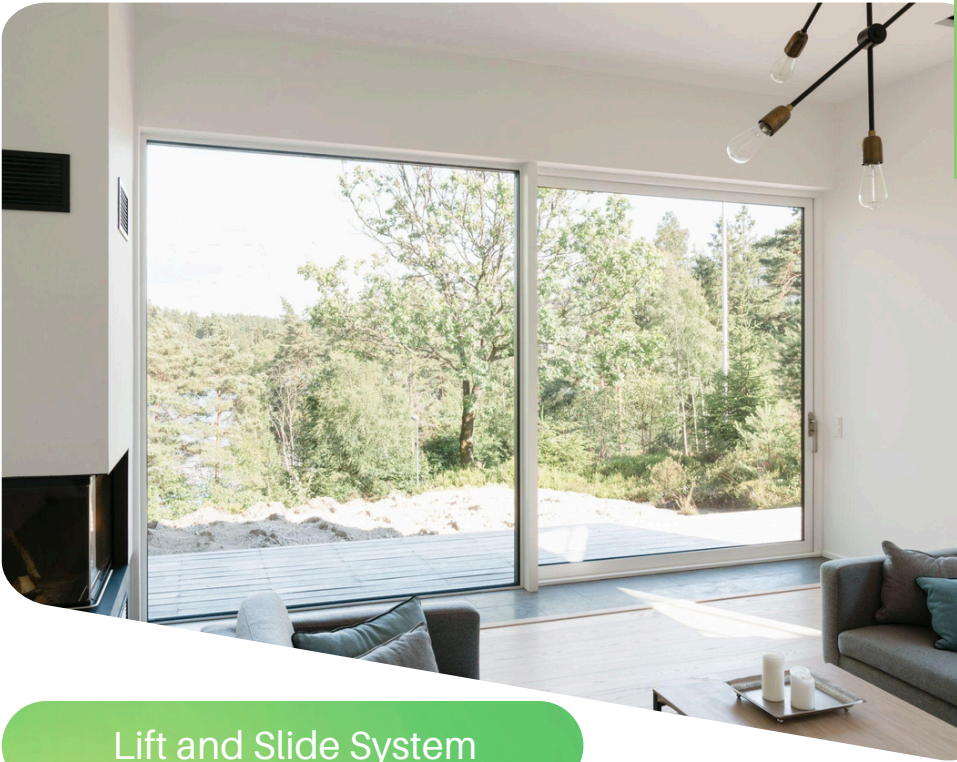
- Variety of designs: single, double, and triple-track outer frames
- Flat outer frame profile as a continuous frame
- Compatible with toplights, sidelights, and spandrel panels from Schüco AWS 50, 60, and 65 systems
- Smooth, quiet operation of sliding units with excellent weathertightness
- Support options available with Schüco SmartStop and SmartClose
- Can be designed for burglar resistance



Product Details

Application: Window or Door

Min.-max. vent height	818-3000mm
Min.-max. vent width	700-3000mm
Vent frame face width	84mm
Min Interlock face width	94mm
Basic depth	120mm
Burglar Resistance	Upto RC2
Glass panel thickness	8-32mm
Tracks	1,2,3
Wind load resistance	Class C4/B5
Air permeability	E750
Watertightness	Class 9A



Lift and Slide System

Casement Openables - Open up to the beauty of nature



AW 40. NI.



Planning Benefits:

- Outward-opening aluminum windows with 40 mm depth
- Sleek narrow face width
- Compatible with glass thicknesses from 4 mm to 26 mm
- Variety of styles: projected side-hung, side-hung, projected top-hung, double vent
- Concealed fittings for a flush look
- Options for single-point and multi-point locking
- Exceptional resistance to high wind loads

Planning Benefits

- Non-insulated aluminum window system tailored for interior construction or warm climate areas
- Design versatility enhanced by its integration with the concealed Schüco AvanTec SimplySmart fitting system
- Capable of supporting large vent weights with an opening angle of 180°
- Offers burglar resistance that meets DIN EN 1627 standards
- Extensive options available in side-hung, turn/tilt, and tilt/slide designs
- Outward-opening windows are also an option

AWS 50. NI



ADS 50. NI



Planning Benefits:

- Extremely narrow face widths
- Flat thresholds for easy-access construction without watertightness
- Diverse opening types: single and double-leaf, inward and outward-opening, panic, anti-finger-trap, swing, and all-glass doors
- Elevated security: burglar resistance compliant with DIN EN 1627
- Windload resistance is Class C3

Planning Benefits:

- Large leaf units with design options: side-hung, swing, opposed opening, all-glass doors.
- Continuous or sill leaf profiles available.
- Diverse glazing types, including standard and angled beads.
- High security featuring burglar resistance and panic function.
- Options for concealed door closures and surface-mounted drives.
- Compatible with Schüco façade systems.

ADS 65. NI



Product Details		
Application: Window or Door	AW 40. NI.	AWS 50. NI.
Min.-max. vent height	350-2400mm	540-2500mm
Min.-max. vent width	400-1500mm	470-1700mm
Vent frame face width	74mm	60mm
Outer frame face width	44mm	42mm
Min-Max face width of Mullion	64-74MM	30mm
Basic depth	50mm	69mm
Glass panel thickness	4-14mm	6-24mm
Watertightness	Class 9A	300Pa
Air permeability	Class 4	300Pa

Product Details		
Application: Door	ADS 50 NI	ADS 65 NI
Max. vent height	2500mm	3220mm
Max. vent width	1100mm	3180mm
Min face width	141mm	137mm
Burglar Resistance	Upto RC2	Upto RC2
Glass panel thickness	6-32mm	39mm
Opening type	Side hung, Inward/Outward, Single/Double vent	Side hung, Inward/Outward, Single/Double vent
Prrof of Durability	Class 5	200,000 cycles (DIN EN 12400)

Schüco windows offer a stunning variety of depths and opening styles, equipped with comfortable features for ease of use! They truly transform spaces, allowing for stunning views and natural light to enhance your living environment

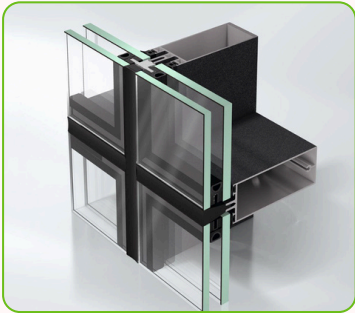
Facades





Facade and Skylight

FWS 50 NI



Planning Benefits:

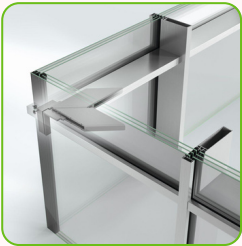
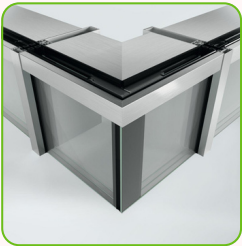
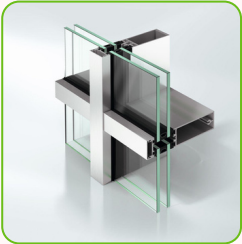
- Minimal aluminum support allows for expansive grids and optimal outdoor views.
- Offers diverse design options, including capped and structurally glazed solutions with various sealing techniques.
- Enhancements like skylights, angular panels, and integrated lighting increase appeal.

Product Details		
Application: Facade or Skylight		
Min basic depth of mullion	50mm	
Max basic depth of mullion	250mm	
Face width of pressure plate	50mm	
Face width of Mullion	50mm	
Face width of Transom	50mm	
Burglar resistance	Upto RC2	
Min-Max Glass Panel thickness	6-38mm	
Polygon facade angle	45°	
Wind load resistance	3000 Pa	
Air permeability	600Pa	

FWS 35 PD

Planning Benefits:

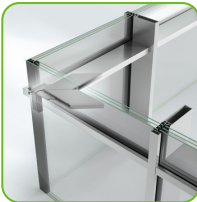
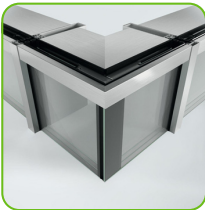
- High-quality design with an all-glass corner for maximum transparency.
- Components for Schüco sun shading systems reduce cooling loads and energy consumption.
- Seamless integration with Schüco opening units, ensuring high planning reliability.
- Minimal thermal bridging with unobtrusive components for perfect façade integration.



Award Winning Facade System

Product Details	
Application: Facade	
Min face width	35 mm
Min.-max. system basic depth	65-150 mm
Min.-max. basic depth of mullion	65-125 mm
Min.-max. face width	35 mm
Max sound reduction	51 dB(A)
Burglar Resistance	Up to RC3
Glass panel thickness	4-50 mm
Impact resistance	I5/E5
Wind load resistance	2.0/3.0 [kN/m²]
Air permeability	AE
Watertightness	RE 1200

FWS 50 NI



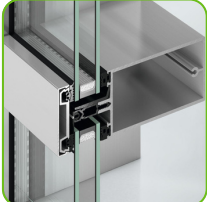
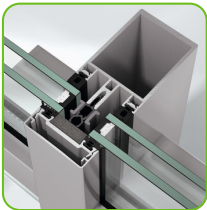
Planning Benefits:

- Minimalist spandrel safety barrier for a cohesive façade.
- Variety of pressure plate profiles and façade cover caps, including stainless steel.
- Integration of various Schüco window, door, and sliding system units.

Application: Facade or Skylight	FWS 50	FWS 60
Min face width	50 mm	60 mm
Min-Max system basic depth	6-255 mm	6-255 mm
Min-Max Face Width	50 mm	60 mm
Min basic depth of mullion	50mm	50mm
Max basic depth of mullion	250mm	250mm
Burglar resistance	Up to RC3	Up to RC3
Max Glass Panel thickness	62 mm	62 mm
Water tightness	RE 1200	RE 1200
Wind load resistance	2.0/3.0 [kN/m²]	2.0/3.0 [kN/m²]
Air permeability	AE	AE

Skylights

FWS 60



Architecture is a form of art that evokes aesthetic emotions within a space, whether consciously or unconsciously. When this environment fosters a sense of well-being, it truly embodies the essence of architectural beauty.

GR 52

Planning Benefits:

The innovative Schueco railing system seamlessly blends aesthetics, quality, minimalist design, and safety, making it an outstanding choice. It offers the elegance and visual allure of an all-glass solution while ensuring easy fabrication and installation. Additionally, it acts as a robust safety barrier, providing maximum protection. The durable profiles and connections guarantee the essential safety for both internal and external applications.

Minimalistic Design

Featuring fewer components, this system boasts a sleek, minimalistic design while fulfilling its necessary functions.

Floor-Mounted Railing

Reliability is paramount, and all variations of this system have undergone third-party testing to ensure maximum safety and peace of mind for users.

Code Compliance

Designed and tested to meet local building codes, this system guarantees compliance.

Offerings

This system addresses all requirements for glass railings, presenting options for floor-mounted and face-fitted versions suitable for both straight and corner solutions.

Design typology

Straight railing

Corner railing

System data

52 mm Profile depth	58 mm Profile depth	Max 1500 kg Panel height	17.52 mm Glass thickness
------------------------	------------------------	-----------------------------	-----------------------------

Schueco certified performance

1000 N
Horizontal UDL line load, ASTM

3000 N / 2000 N
Infill UDL, ASTM

1000 N
Concentrated point load, ASTM

100 lbs / 45 kg
Impact load



Railing Systems

Know your glass

DGU



DGU glass, or double glazing units, consist of two panes of glass that are separated by a spacer and filled with argon gas between the layers.

- **ENERGY EFFICIENT (> LAMINATE)**
- **ACOUSTIC REDUCTION**
- **HIGHLY SECURE**
- **STRONG AND STURDY**
- **UV PROTECTION**

SGU



Single layer of a toughened glass

- **TOUGHENED**
- **COST EFFECTIVE**
- **MINIMAL ACOUSTIC PERFORMANCE**
- **IDEAL FOR SMALLER OPENINGS**
- **CAN BE ENHANCED FOR UV PROTECTION**

LAMINATE



Laminated glass consists of a thin layer of glass that is fused together using a material known as an electroless nickel layer.

- **ENERGY EFFICIENT**
- **ACOUSTIC REDUCTION**
- **HIGHLY SECURE**
- **STRONG AND STURDY**
- **UV PROTECTION**

DGU LAMINATE



Two laminated glass panels are joined together using a spacer that is filled with argon gas.

- **FOR VERY LARGE OPENINGS**
- **MAXIMUM STRENGTH**
- **EXTREMELY SECURE**
- **HIGH ENERGY EFFICIENCY**
- **BEST ACOUSTIC REDUCTION**
- **UV PROTECTION**

Glass Enhancements



FROSTED



TINTED



REFLECTIVE



COLORED

The versatility of glass allows for various uses, including architectural features and practical applications like insulation and soundproofing. It can be energy-efficient, reducing heat loss and the need for artificial lighting, making it an environmentally friendly choice that enhances building aesthetics.

Coating and Finishes

Powder Coating:
Powder coating stands out as one of the most favored finishes for aluminum surfaces across various products. It enhances the durability of bare aluminum and is available in an array of vibrant colors.

Anodizing finish:
Anodizing is an electrochemical technique that forms a protective layer on aluminum, enhancing its durability, resistance to corrosion, and visual appeal. The resulting metallic finish is truly stunning.

Wood Effect Coating(Premium):
A wood effect coating applied to aluminum is a powder coating technique that mimics the look of natural wood. This coating combines the durable structural characteristics of aluminum with the visual appeal of wood.

PVDF Coat (Premium):
Polyvinylidene fluoride (PVDF) is a resin-based coating designed to shield metals from weathering, fading, and chalking. This fluoropolymer is chemically and thermally stable, granting it resistance to UV rays, temperature fluctuations, salt spray, and atmospheric fallout.



ANODIZE



WOOD EFFECT



POWDER COAT AND PVDF

Brand and Warranty:

The powders from the reputed Global brands like Akzo Nobel, Pulver ensure a robust and lasting finish, capable of withstanding various environmental conditions. The warranties ranging from 15-25 years provided with our products reflect our commitment to quality and customer satisfaction.

A window is akin to a work of art – carefully crafted, beautifully painted, and designed to delight your eyes while enhancing the charm of your home. Each window tells its own story, framing the world outside like a living portrait.

ABOUT US

We are engineers with a strong passion for our craft. Our expertise lies in manufacturing a wide variety of windows for both individual homes and residential projects. We empower you with our unmatched service and brand quality. Schueco products are available in over 80 countries worldwide, and they undergo rigorous testing for thousands of cycles. What we promise is exactly what you receive.

Our dedicated team works tirelessly to ensure that every interaction is personalized and meets the highest standards of excellence. From the moment an order is placed to the final delivery, we are committed to creating a seamless and enjoyable experience for our customers. We continuously seek feedback to improve and innovate, ensuring that we not only meet but exceed expectations.

BECAUSE YOUR HOME DESERVES THE BEST



10

YEARS
OF EXPERIENCE



WHOLE HOUSE
RANGE



SINGLE &
DOUBLE GLAZING



RANGE OF
POWDER
COATS



SECURITY
FIRST



ENERGY EFFICIENT



WARRANTY



ALUSTAR
Engineered with Precision

ABOUT US

We are engineers with a strong passion for our craft. Our expertise lies in manufacturing a wide variety of windows for both individual homes and residential projects. We empower you with our unmatched service and brand quality. Schueco products are available in over 80 countries worldwide, and they undergo rigorous testing for thousands of cycles. What we promise is exactly what you receive.

Our dedicated team works tirelessly to ensure that every interaction is personalized and meets the highest standards of excellence. From the moment an order is placed to the final delivery, we are committed to creating a seamless and enjoyable experience for our customers. We continuously seek feedback to improve and innovate, ensuring that we not only meet but exceed expectations.

BECAUSE YOUR HOME DESERVES THE BEST



10

YEARS
OF EXPERIENCE



WHOLE HOUSE
RANGE



SINGLE &
DOUBLE GLAZING



RANGE OF
POWDER
COATS



SECURITY
FIRST



ENERGY EFFICIENT



WARRANTY



ALUSTAR
Engineered with Precision